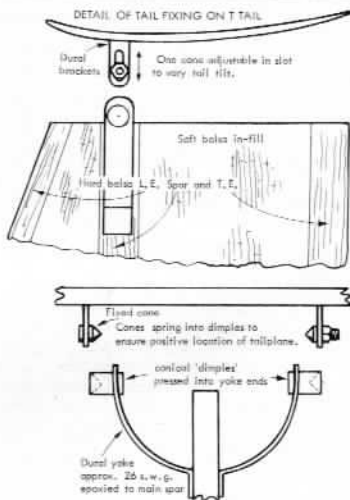
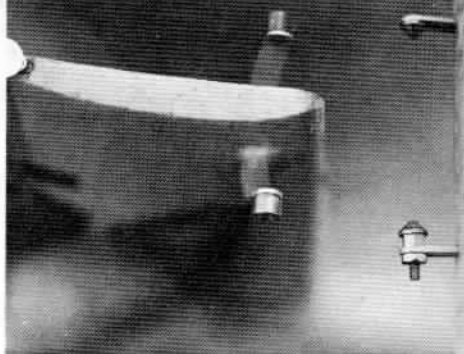




René Butty flew this extreme layout glider at the 1978 British Nationals, notching up five maxes before dropping a flight. The combination of a very forward CG position with the minute inverted tail produces a highly stable model, and allows remaining area saved to be used on larger wing. Many other new ideas are incorporated in this Swiss design as explained in the text. Right: Springy Clips give T tail mount on fin, and pivot for DT, with knock-off facility.



Martin Dilly reports....

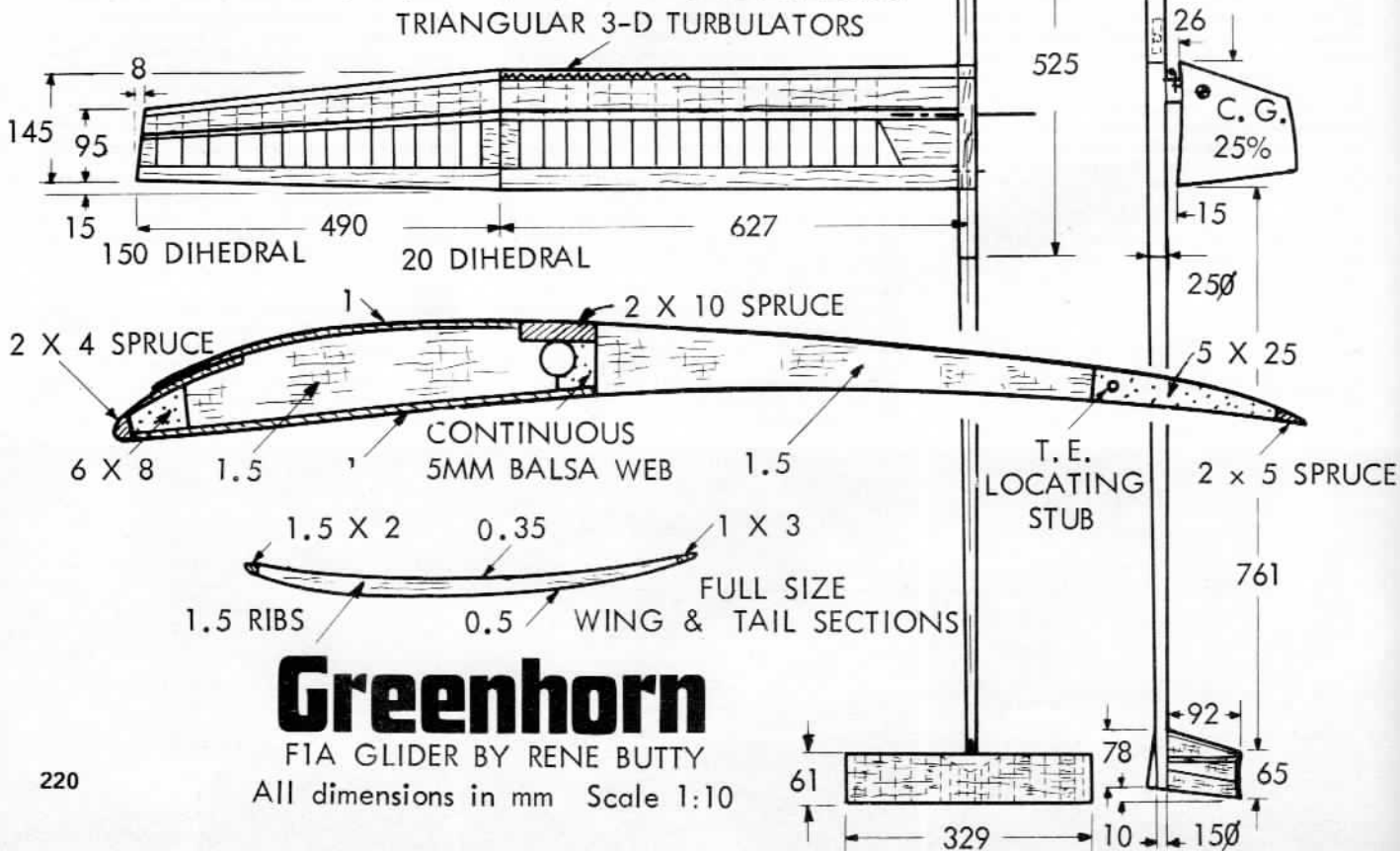
BUTTY'S A/2

My part of this month's Free Flight Scene will concentrate entirely on one aircraft, René Butty's F1A glider; René was in the 1978 Swiss indoor team at Cardington, is also an A/2 flyer and has been living near me recently while perfecting his English. With him he brought a small ply box about 2ft x 6in square, containing two of the most interesting gliders I have seen for years.

Based on a design by fellow-countryman Dieter Siebenmann, the model's most obvious feature is the minute tailplane, actually 1.9dm² (29.5sq in) as against

4.5dm² (70sq in) used by typical British A/2s. T-mounted on top of a solid balsa fin, this tailplane at first appears to be built from a rather nice sheet of quarter grain 2mm balsa; closer inspection shows that it is built up with 1.5mm hard balsa ribs, 0.35mm balsa lower skin and 0.5mm top, plus a leading and trailing edge spar! Instead of the normal ply mount with bands holding the tailplane down onto it, a light alloy strip is epoxied into the tailplane centre section, with each end bent perpendicular to the surface, and carrying very small steel cones at its ends, as shown in the drawing. One of these cones can be slid vertically in a slot in the alloy strip, and locked in position with a nut on a threaded portion to its rear; this adjustment is used to alter tailplane tilt.

The solid balsa fin is in fact made with a hard balsa mainspar, leading edge and trailing edge, with very light quarter grain infill forming the remainder. A light alloy



Greenhorn

F1A GLIDER BY RENÉ BUTTY
All dimensions in mm Scale 1:10